



CELEBRATE SUMMER

SFS

SUPPLYING FOODSERVICE SOLUTIONS
SCHIFF'S FOOD SERVICE, INC.

Schiff's Food Service reserves the right to limit quantities & correct typographical errors. Promotional prices & allowances valid from 7.3.23 - 8.4.23

GET GRILLING!

YOUR FAVORITE CUTS



- SFS Ground Beef (#740515, 1/10 lb)...**\$.50 off/cs**
- SFS Beef Porterhouse Steak CH (#740220, 1/10 ctcw)...**\$.20 off/lb**
- SFS Beef Ribeye Steak CH (#740115, 1/4-3 ctcw)...**\$.20 off/lb**
- SFS Beef Strip Steak CH 0x1 (#740829, 1/4-3 ctcw)...**\$.20 off/lb**
- SFS Beef T-Bone Steak CH (#740255, 1/10 ctcw)...**\$.20 off/lb**
- SFS Chicken Shell Cut to Spec (#710028, 10/3.5 lb avg)...**\$.10 off/lb**
- Packer Pork BB Ribs 2 lb avg FF IBP (#720207, 18/3 lb avg)...**\$.10 off/lb**
- Packer Beef Briskets CH CV (#730415, 5/11 lb avg)...**\$.10 off/lb**
- Packer Pork Butts Boneless (#720357, 4/2-8 avg)...**\$.10 off/lb**
- SFS Sweet Rope Sausage (#650031, 1/10 lb)...**\$1.00 off/cs**
- SFS Hot Rope Sausage (#650032, 1/10 lb)...**\$1.00 off/cs**

SPICE THINGS UP



- Applewood Smoked Rub (#264010, 6/26 oz)
- McCormick Grill Mates Montreal Steak (#264075, 6/29 oz)
- French Fry Seasoning (#264130, 6/26 oz)
- Quebec Steak Seasoning (#264303, 6/26 oz)
- Pickling Spice (#264332, 6/14 oz)
- Lemon Pepper Spice (#264374, 6/20 oz)



- Cattleman's Original St. Louis BBQ Sauce (#216010, 4/1 gal)...**\$1.00 off/cs**
- Cattleman's Carolina Gold BBQ Sauce (#216015, 4/1 gal)...**\$1.00 off/cs**
- Cattleman's Kansas City Classic BBQ Sauce (#216020, 4/1 gal)...**\$1.00 off/cs**
- Cattleman's Memphis Sweet BBQ Sauce (#216030, 4/1 gal)...**\$1.00 off/cs**
- Cattleman's Mississippi Honey BBQ Sauce (#216141, 4/1 gal)...**\$1.00 off/cs**

IT'S PICKLEPALOOZA!

Pickles are a trend that continue to climb in popularity! Look for new ways to incorporate those crunchy, briny bites!

TRY PICKLE, RANCH & DILL PIZZA!

16" DeIorio's Par Baked Pizza Shell (#318967)
4-5 oz Ranch Dressing (#210190)
6-8 oz Shredded Mozzarella Cheese (#430075)
Dill Pickle Chips, 15-20 (#455176)
Fresh Dill, sprinkled over top (#510325) or Dill Weed Spice (#264127)
Pinch of salt (#264711), when baked

DeIORIO'S

*Featuring....*16" Par Baked Pizza Shell (#318967, 16/16 in)
*Also try....*Deluxe Cheezy Bread Sticks (#318962, 72/2.4 oz)



HAVE YOU TRIED PICKLE PIEROGIES?

NEW! Pickle Pierogie (#302195, 6/1 doz)
ALSO NEW! Roasted Garlic Pierogie (#302196, 6/1 doz)

PICKLE BACON CHEESEBURGER

1 ea Brioche bun, toasted (#290272)
2 ea Beef patties, grilled (#330404)
2 ea Cheddar cheese, sliced (#440205)
6 ea Fried pickles (#300503)
2 ea Bacon, slices, cooked (#610032)
2 ea Tomato, slices (#510745)
2 fl oz Ken's Dill Pickle Aioli (#216444)

Layer bun, aioli, burger, cheese, bacon, burger, cheese, pickles, tomato, and crown of bun with more aioli.



SUMMER FAVORITES



- 80-20 Homestyle Beef Patty #2131W (#330451, 30/5.3 oz)...\$1.00 off/cs
- 80-20 Round Beef Patty #2002W (#330453, 50/3.2 oz)...\$1.00 off/cs
- 80-20 Homestyle Beef Patty #2124 (#330454, 24/6 oz)...\$1.00 off/cs
- 80-20 Homestyle Beef Patty #2149 (#330459, 20/8 oz)...\$1.00 off/cs
- 80-20 Round Beef Patty #2014W (#330461, 30/5.3 oz)...\$1.00 off/cs
- 80-20 Round Beef Patty #2104W (#330404, 40/4 oz)...\$1.00 off/cs

CLEMENS

FoodGROUP

- Precooked 5/1 Sweet Sausage Links (#332209, 1/10 lb)...\$.50 off/cs
- Grill Franks 8/1 (#630021, 1/10 lb)...\$.50 off/cs
- Baby Back Ribs Cooked Sauced (#720094, 1/25 lb avg)...\$.05 off/lb



- Rotella 4" Brioche Bun #00686 (#290272, 6/8 ct)...\$2.00 off/cs
- Rotella 4" Kaiser Bun #00401 (#290298, 8/6 ct)...\$2.00 off/cs
- Rotella 3" Brioche Slider Bun #01094 (#290841, 108/1.5 oz)...\$2.00 off/cs
- Rotella 6" Hot Dog Bun #00363 (#290843, 6/12 ct)...\$2.00 off/cs
- Rotella 4" Hamburger Bun #01687 (#290845, 12/8 ct)...\$2.00 off/cs
- Rotella Bread 3/4" Sliced Sourdough (#290289, 8/36 oz)...\$2.00 off/cs
- Rotella Bread 5/8" Sliced Marble Rye (#290412, 6/36 oz)...\$2.00 off/cs



- UDI's Gluten Free Hot Dog Bun I.W. (#290927, 24/2.4 oz)
- UDI's Gluten Free Hamburger Bun I.W. (#290928, 24/3.2 oz)
- UDI's Gluten Free 12" Hoagie Roll (#290901, 12/6.2 oz)

CONDIMENTS

Woeber's

Woeber Mustard Deli Style Spicy Brown (#224007, 4/1 gal)...\$2.00 off/cs

Woeber Mustard Yellow Salad Style (#224012, 4/1 gal)...\$2.00 off/cs

Woeber Mustard Dusseldorf (#224021, 4/1 gal)...\$2.00 off/cs

Woeber Mustard Squeeze Spicy Brown (#224091, 12/12 oz)...\$2.00 off/cs

MIX UP A SIGNATURE SAUCE



Secret Sauce: Combine 1 c Kraft Mayo (#210015), 1 c Heinz Ketchup (#204220), 1/2 c Sweet Relish (#234437), 1 tbsp Apple Cider Vinegar (#224200), 2 tsp sugar (#226014), 2 garlic cloves, minced (#510345), 1/8 tsp pepper (#264283). Refrigerate for 30 minutes, then enjoy on your favorite burger or as a dipping sauce!



Heinz Ketchup (Cans) (#204220, 6/#10 can)...\$1.00 off/cs

Heinz Ketchup Store N' Pump (Jugs) (#204227, 6/114 oz)...\$1.00 off/cs

Heinz Ketchup (Pouches) (#204225, 6/#10 pch)...\$1.00 off/cs

Kraft Delux Mayonnaise (#210015, 4/1 gal)...\$92.95/cs



Red Gold 33% Ketchup (#204223, 6/#10 can)...\$1.00 off/cs

Red Gold Ketchup Upside Down Squeeze (#204445, 25/20 oz)...\$1.00 off/cs

Red Gold Ketchup Squeeze (#204449, 24/14 oz)...\$1.00 off/cs

Red Gold Marinara Cups (#262099, 84/2.5 oz)...\$1.00 off/cs

Red Gold Ketchup Packets (#262288, 1000/9 gram)...\$31.95/cs



YOUR CATCH OF THE DAY!



- 8-12 ct Raw P&D Tail-on Shrimp (#336113, 5/2 lb)...\$1.00 off/cs
- 8 oz Salmon, Skinless, Boneless, IVP (#342098, 20/8 oz)...\$1.00 off/cs
- Summer Favorite!** True North Seafood Salmon Burgers, 5 oz (#342149, 84/5 oz)...\$1.00 off/cs
- 7 oz Warm Water Lobster Tails (#340128, 1/10 lb)...\$1.00 off/cs
- 14-16 oz Warm Water Lobster Tails (#340136, 1/10 lb)...\$1.00 off/cs

SATISFYING SALADS



- Sweet Baby Ray's Original BBQ Sauce (#210061, 4/1 gal)...\$1.00 off/cs
- Ken's Hickory BBQ Sauce (#216003, 4/1 gal)...\$1.00 off/cs
- Ken's Cannonball BBQ Sauce (#216006, 4/1 gal)...\$1.00 off/cs
- Sweet Baby Ray's Golden BBQ Sauce (#216017, 4/1 gal)...\$1.00 off/cs
- Sweet Baby Ray's Citrus Chipotle BBQ Sauce (#216021, 4/1 gal)...\$1.00 off/cs
- Sweet Baby Ray's Korean BBQ Sauce (#216025, 4/1 gal)...\$1.00 off/cs
- Sweet Baby Ray's Bourbon Molasses Sauce (#216969, 4/64 oz)...\$1.00 off/cs
- Sweet Baby Ray's Honey BBQ Sauce (#216027, 4/1 gal)...\$1.00 off/cs
- Ken's Avocado Ranch Dressing (#216450, 2/1 gal)...\$3.00 off/cs
- Ken's Dill Pickle Aioli (#216444, 2/1 gal)...\$3.00 off/cs
- Ken's Cucumber Wasabi Dressing (#210205, 2/1 gal)...\$3.00 off/cs
- Ken's Green Goddess Dressing (#210207, 2/1 gal)...\$3.00 off/cs
- Ken's Creole Chili Pepper Sauce (#216053, 2/1 gal)...\$3.00 off/cs
- Ken's Lemon Vinaigrette Dressing (#210153, 2/1 gal)...\$3.00 off/cs
- Ken's White Balsamic Vinaigrette (#210159, 2/1 gal)...\$3.00 off/cs



Grilled Iceberg Wedge Salad-

Remove outer leaves of iceberg lettuce head (#510410). Quarter slice through core. Brush sides of 1 with oil and season with salt (#264711) & pepper (#264290). Grill. Drizzle wedge with Ken's Green Goddess Dressing (#210207). Serve with chopped bacon (#610032) and diced tomatoes (#510745).

DELICIOUS APPS

NEW! Sweet Corn on the Cob Curls (Corn Ribz)

In Light Hickory Smoked Batter, Approx. 92 pcs
(#300375, 4/4 lb)...\$2.00 off/cs

NEW! McCain Cauliflower Wingz,

Large pickled cauliflower florets with a clear, crispy coating
(#300377, 3/4 lb)...\$2.00 off/cs

Brew City 5/8" Thick Beer Battered Onion Rings

(#300395, 6/2.5 lb)...\$2.00 off/cs

Anchor Jalapeno Popper, Cheddar Cheese

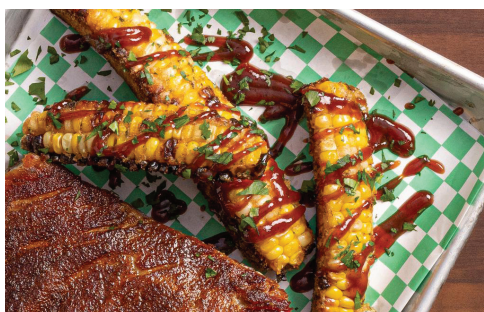
(#300410, 4/4 lb)...\$2.00 off/cs

McCain Skin-on Fresh Style Potato Chips

(#302534, 3/4 lb)...\$2.00 off/cs



MENU INSPO: VEGGIEZ APPS



BBQ Corn Ribz: Serve Corn Ribz (#300375) drizzled with a sweet BBQ sauce (#216027) and garnished with chopped parsley (#510490). Serve beside a rack of your own dry-rubbed ribs (#720207)!



Cauliflower Wingz Tacos: Pile flour tortillas with Cauliflower Wingz (#300377), shredded lettuce (#560051) and purple cabbage (#510171), sliced jalapeno (#234321), crumbled feta cheese (#435222), salsa (#216117) or pico de gallo.

SOMETHING SWEET

Dianne's
FINE DESSERTS

New York Style Cheesecake (#316096, 2/70 oz)

Chocolate Mondo 3 Layer Cake (#316092, 2/80 oz)

Mini Assorted Cheesecakes (#316100, 3/35 ct)



DON'T FORGET YOUR PAPER PRODUCTS!



Dinner Napkins (#272562, 20/150 ct)...\$1.00 off/cs

Moist Towelettes (#272800, 1/1000 ct)...\$.50 off/cs

12 oz Clear Polypropylene Cups (#283612, 20/50 ct)...\$.50 off/cs

16 oz Clear Polypropylene Cups (#283616, 1/1000 ct)...\$.50 off/cs

Food Tray, 1 lb (#280105, 4/250 ct)...\$.50 off/cs

Food Tray, 2 lb (#280107, 4/250 ct)...\$.50 off/cs

Food Tray, 3 lb (#280110, 1/500 ct)...\$.50 off/cs

Food Tray, 5 lb (#280112, 1/500 ct)...\$.50 off/cs

SCHIFF'S FOOD SERVICE, INC.

Main Office & Warehouse

7 Stauffer Industrial Park

Taylor, PA 18517

1.800.800.0557

Easton Location

364 E Berwick St

Easton, PA 18042

610.253.9141

WWW.SCHIFFS.COM